

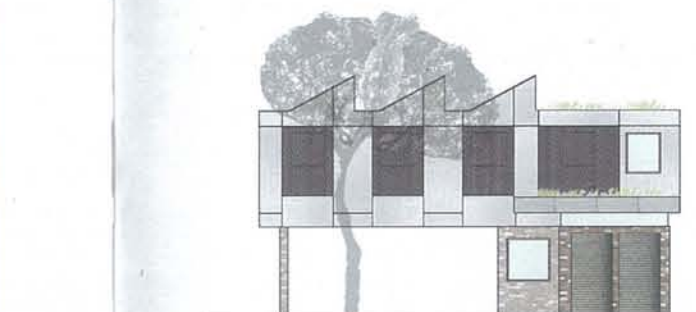
WINNER

Architect: Workshop 1
Dunn & Hillam Architects
Botany, NSW
www.workshop1.com.au

This is an attractive project for a smaller than average house that has dealt not only with the technological, practical and passive energy aspects of sustainability, but with lifestyle.

The smart and convivial spatial arrangements flow easily into each other, yet all maintain their own special character. The house displays a relaxed relationship with the thoughtfully designed garden. It invites us to live differently, to live with less, to be in touch and aware of our relationship with nature and the processes of consumption. It asks the important question of whether we need indulgence in order to be happy.

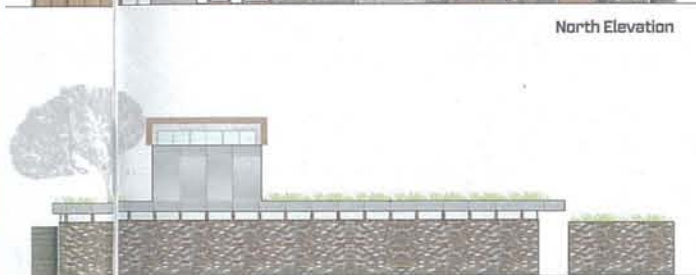
- The house is comfortable, aesthetically appealing, yet it is not pretentious and it does not struggle to make a mark.
- It shows a sensible use of the northern aspect.
- Its approach to sustainability is holistic in the sense that, without compromising comfort, it addresses "lifestyle" by providing a solution that is generous yet not wasteful.
- The consideration of a vegetable garden speaks of a degree of self-sufficiency, but more importantly, engagement with the process of consumption and the promotion of a purposeful type of physical activity.
- The proposal addresses technical aspects for self-sufficiency such as solar panels, best orientation and rainwater collection.
- The suspended first floor level serves two purposes. While making best use of its eastern orientation for the bedrooms, it provides a useful covered area underneath. This approach eliminates the need to construct yet another structure for pergolas or terraces.



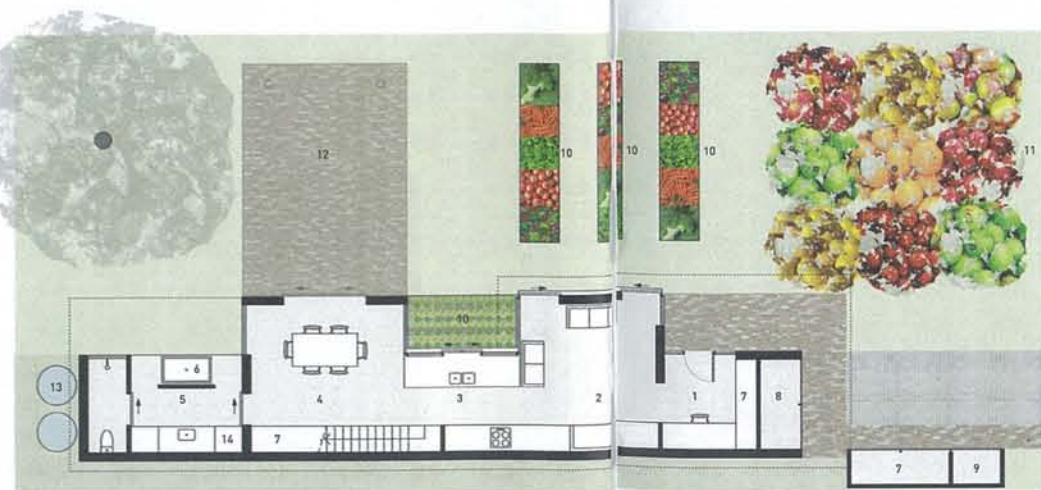
West Elevation



North Elevation



South Elevation



Ground Floor Plan

- 1 Entry/ Study
- 2 Living
- 3 Kitchen
- 4 Dining
- 5 Bathroom
- 6 Outdoor Bath
- 7 Storage
- 8 Bicycle Box
- 9 Bin Cupboard
- 10 Vegetable Garden
- 11 Orchard
- 12 Garden Terrace
- 13 Rainwater Tanks
- 14 Laundry



& SOME OTHER FAVOURITES

Architect: Zen Architects
Fitzroy North, VIC
www.zenarchitects.com

Zen Architects produced a well-thought-out design option that would appeal to those who want to do the right thing by reducing their ecological footprint and still enjoy a generous living space. This proposal displays an almost seamless interface with the garden and makes the most of the northern aspect and the open terraced area, which is integrated into the overall living space.



Architect: Owen and Vokes
South Brisbane, QLD
www.owenandvokes.com



Architect: Pidcock Architects
Redfern, NSW
www.pidcock.com.au



The design two proposals above both do well in their use of the northern aspect. The designs are compact, leaving enough open space for gardens. Both these options succeed in what they have set out to do, yet one opts for a more traditional look while the other opts for a more modern look and "collective" approach to living, so proving that aesthetic preferences and living approaches do not need to be compromised when trying to achieve a more sustainable way of living.

Scale vs. Status

Our recent competition and exhibition, held as part of the State of Design Festival, was a wonderful success. The architects involved stunned us with their innovative designs and judging was extremely difficult. Here is our winner and three highly commended others. To see all of the models, plans and specifications plus a video of the event go to www.greenmagazine.com.au

The brief:

- design a house for a family of four
- demonstrate the best thermal and energy efficiency
- use sustainable materials
- keep it modest, yet highly livable ...and construct a 1:50 scale model.

Comments on the projects courtesy of *Scale vs. Status* judge **Beatriz C Maturana** B.Arch M.Urb.Des. Architects for Peace Vice-President and Founder.

Workshop 1 Dunn + Hillam Architects will receive the Home 3 armchair, designed by Cornwell Hecker from Stylecraft.

stylecraft